



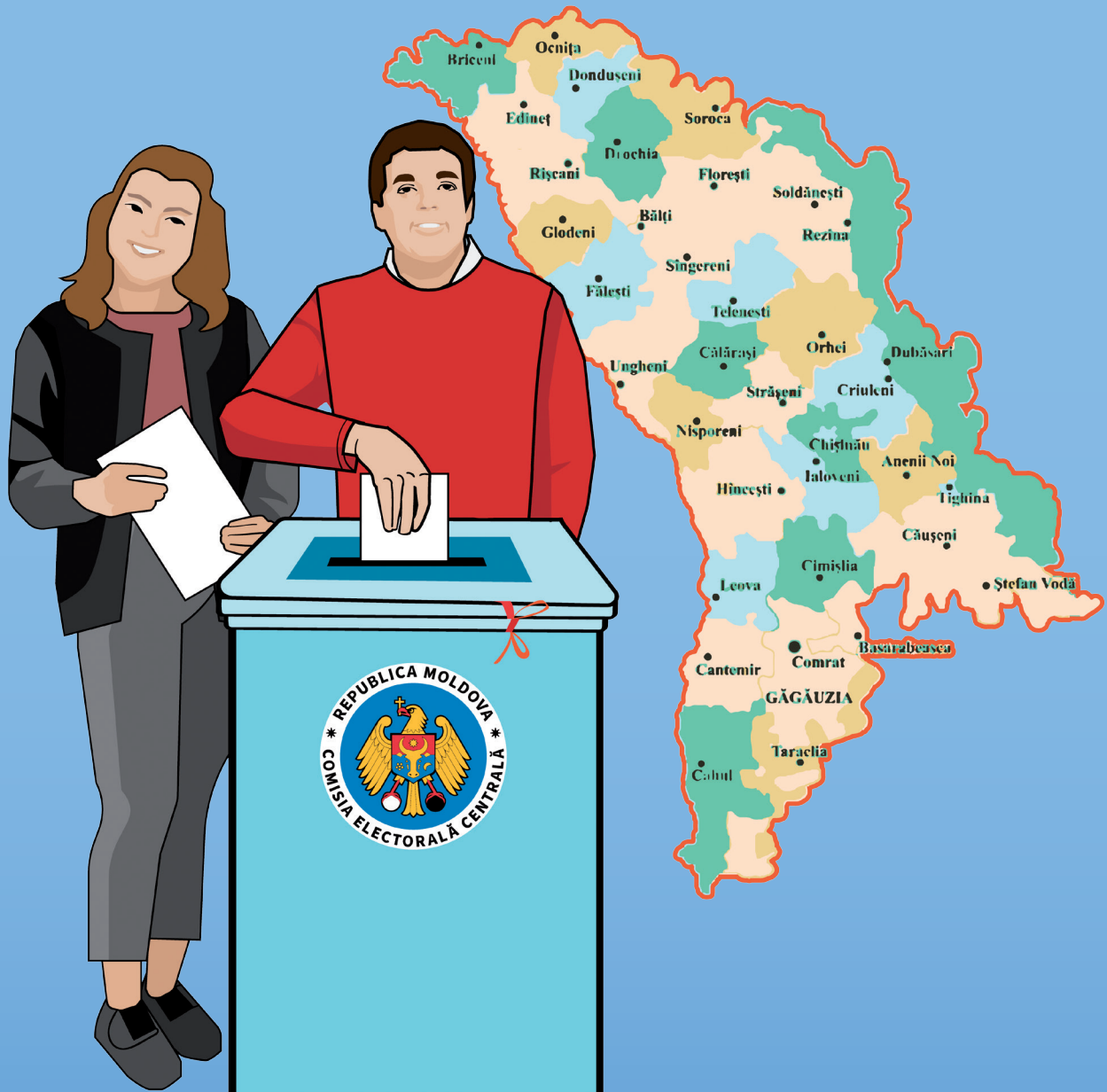
**USAID**  
FROM THE AMERICAN PEOPLE



Asociația  
"MOTIVAȚIE"  
din Moldova



# THE ELECTION GUIDE



Version easy to read

Chisinau 2018

**Responsible for the edition:**

Igor Meriacre, Executiv Director,  
Association „MOTIVAȚIE” Moldova, [www.motivatie.md](http://www.motivatie.md)

Victor Koroli, Executiv Director,  
Alliance „INFONET”, [www.infonet.md](http://www.infonet.md)

**Adaptation of the text in easy to read and understand format:**

Gheorghe Zastavnetchi, expert  
„Speranta” Center, [www.speranta.md](http://www.speranta.md)

**Illustrations:**

Marietta Orlova, Irina Volosina

The information presented in this guide has been tested to ensure it is easy to read and easy to understand, by a group of 30 people with intellectual and learning disabilities in the Republic of Moldova.

**We would like to thank:**

The Community Mental Health Center Botanica in Chisinau, [www.psi.md](http://www.psi.md)

The Hincesti Initiative Group “From Right to Action”

The group of young self-deputies from the shelter in the village of Lapusna, Hincesti district

The Hincesti District Council

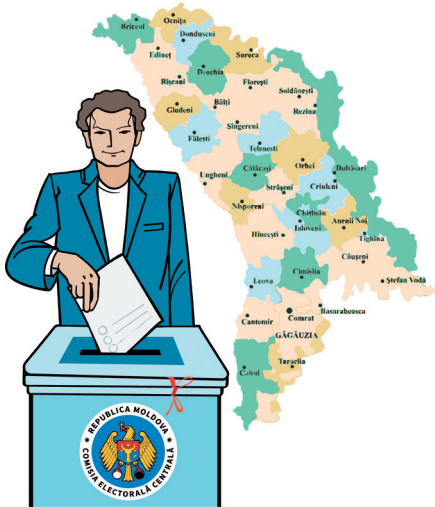
Republishing and reproduction of this guide, require written approval from IFES (International Foundation for Electoral Systems).

**This book will help you to understand what the elections are and why it is important to go to vote.**

## **Table of contents**

<b>What are elections.....</b>	<b>pagina 2</b>
<b>There are many types of elections.....</b>	<b>pagina 2</b>
<b>Who may participate in elections.....</b>	<b>pagina 4</b>
<b>Who may be elected as a mayor, deputy or president.....</b>	<b>pagina 4</b>
<b>Why it is important to vote.....</b>	<b>pagina 5</b>
<b>How do I decide who I vote for.....</b>	<b>pagina 5</b>
<b>When can I vote.....</b>	<b>pagina 6</b>
<b>How should I vote.....</b>	<b>pagina 7</b>
<b>What should I do in the voting booth.....</b>	<b>pagina 8</b>
<b>What should I do if I cannot go to the electoral section.....</b>	<b>pagina 9</b>
<b>What should I do if I am not in the register of voters.....</b>	<b>pagina 9</b>
<b>Other useful information.....</b>	<b>pagina 10</b>

## What are elections



- **Elections** also are named **the voting**
- **The elections** take place when people vote for **persons or parties** who will govern the country, district or village, where they live



- **The persons or parties, who were elected,** govern the country, district, city or village, where you live
- Many persons who wish to govern the country may group in **political parties**

## There are many types of elections



- At **Parliamentary elections** the persons of the Parliament of our country are voted for
- The persons who are voted are named **parliamentarians**
- **The parliamentarians** decide how to improve schools, hospitals, roads and other things around you

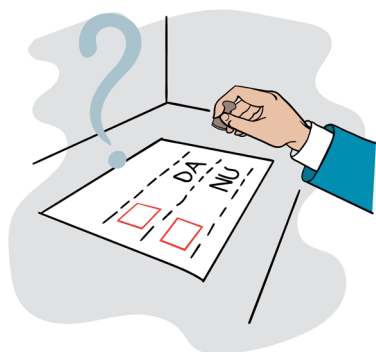
## There are many types of elections



- At **local elections** you vote for the persons who govern cities and villages
- The persons, who were voted at local elections, are named **mayors** and **local counselors**
- **The mayors** and **local counselors** take care that in the villages and cities they govern there are good schools, roads and hospitals



- The country's President is elected by people from the Republic of Moldova.
- **The presidential elections** take place when people vote for **the country's President**
- The country's President makes sure that the people of the country feel good



- **Referendum** is another type of **elections**
- At **referendum** the persons are asked about the most important problems of the country

## Who may participate in elections



- All people who have reached the age of 18 years on election day and are **citizens of the Republic of Moldova** may participate in elections
- **A citizen of the Republic of Moldova** is any person who has all the rights and obligations of the country
- There are situations when the court prohibits some people to participate in **elections**

## Who may be elected as a mayor, deputy or president



- Any **citizen of the Republic of Moldova** who has reached the age of 18 years and lives in the country may be voted as the **Parliamentary Deputy**



- Any person who has reached the age of 18 years and is a **citizen of the Republic of Moldova** may be voted as the **Counselor** in the Mayor's Office
- Any **citizen of the Republic of Moldova** may be voted as the **Mayor** of a village or city

## Who may be elected as a president



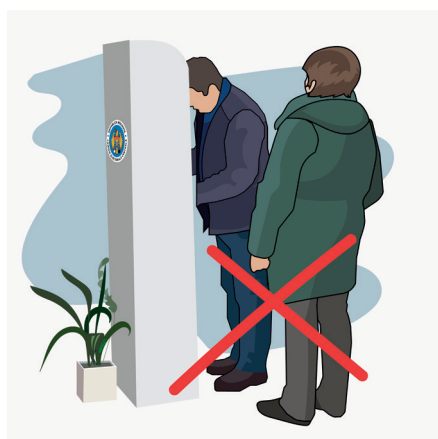
- The country's **President** may be any person who is a **citizen of the Republic of Moldova**
- To be the country's **President** you should be 40 years old
- To be the country's **President** you should live in the country 10 years and know the state language

## Why it is important to vote



- You should vote because it is **your right**
- When you vote, you will feel valuable
- By voting **you choose** who can make your life easier

## How do I decide who I vote for?



- Nobody has the right to force you to vote for somebody
- Before the elections you can get information about who you can vote for from newspapers, TV and family

## When can I vote



- **The Election Day** is the day when you can vote
- **The Election Day** is announced beforehand
- Before the elections you get the information about the place where you can vote

## How should I vote



- The place where you can vote is named **the electoral section**.
- **The electoral section** may be in a school, community center or Mayor's Office.
- On the Election Day you should go to **the electoral section**.



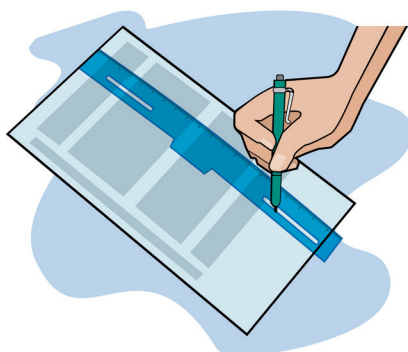
- **At the electoral section** you should take the Identity Card or temporary Identity Card



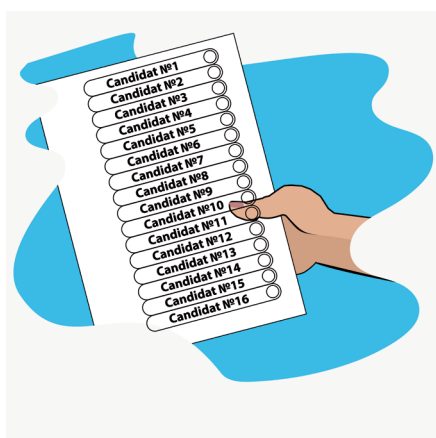
## How should I vote



- At the election section you should present the Identity Card to the persons named **operators**
- You should be informed whether you can vote and will receive a leaf named **voting paper**, for which you will sign in **the register of voters**



- **The register of voters** is a piece of paper where all the persons who may vote are recorded

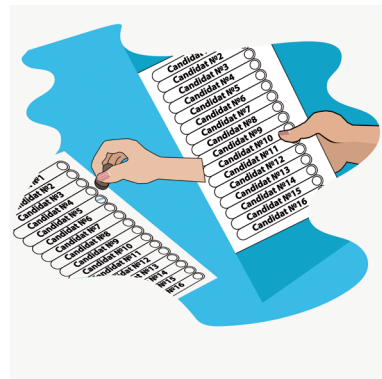


- **The voting paper** is where all the parties and persons for whom you may vote are recorded

## What should I do in the voting booth



- Once you receive **the voting paper**, you enter **the voting booth**
- **The voting booth** is a place where nobody can see who you vote for



- On the table in the booth will be a stamp, with the help of which you can vote
- You should search in **the voting paper** for the name of person or party which you want to vote for
- Press the stamp in the circle on the right of the name you want to vote for
- You may vote only for one party or one person written in the voting paper



- Fold **the voting paper**
- Leave **the booth** with **the voting paper** in your hand and put it in **the ballot box**
- **The ballot box** is a box where people put the voting papers

## What should I do if I am not in the register of voters



- To be sure that you can vote, you should verify if you are recorded in **the register of voters**
- **20 days before** the Election Day you may ask at the Mayor's Office whether you are recorded in **the register of voters**
- If you have a computer with Internet, you may verify if you are recorded in **the register of voters**, enter the page **www.cec.md** or call the phone number 022 88 01 01
- If you cannot make these things, **ask for help** from your friends or family

## What should I do if I cannot go to the electoral section



- If on the Election Day you cannot come to vote because of health problems, you can vote at home or in hospital
- To vote at home, you or your relatives should ask that the ballot box to be brought to your home or hospital
- If you cannot go to the electoral section because of health problems, the ballot box may be brought to your home
- For this you should present a document from a physician

# USEFUL INFORMATION



- To get more information about elections or how to vote call the phone number **022 88 01 01** - Central Electoral Commission (CEC)

- If your or other persons with disabilities rights are infringed, you may call the helpline **0 80 01 08 08**



- The Council for the Prevention and Liquidation of Discrimination and Ensuring Equality **08 00 333 88**

This Guide is developed by the Association „MOTIVAȚIE” from Moldova in partnership with Alliance “INFONET”, within the project: “Supporting Active Engagement of People with disabilities in Moldovan Electoral Processes”, supported by International Foundation for Electoral Systems (IFES).

This manual is made possible by the generous support of the American people through the United States Agency for International Development (USAID) under Award No. AID-OAA-LA-13-00011.

The opinions expressed herein are those of the author(s) and do not necessarily reflect the views of USAID or the United States Government.